

# Impacts on the Belgian real estate market and actions from Investors

## **Alexander Gebauer**

CEO West Europe at  
Allianz Real Estate

## **Tom Newton**

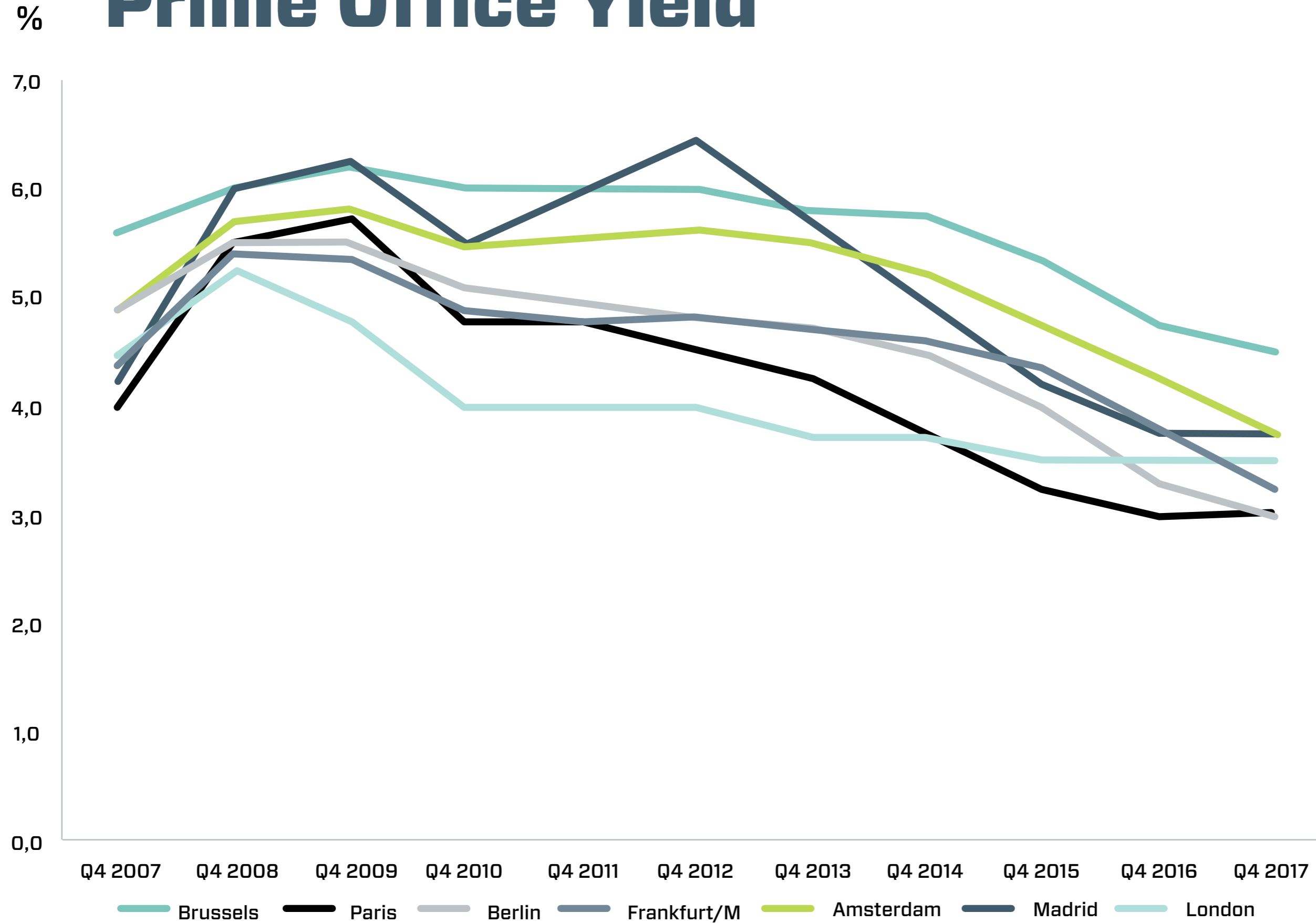
Director at  
Eurocommercial Properties

## **David Rendall**

Director of International  
Real Estate Business  
Development at La Française

Moderated by Jean Blavier

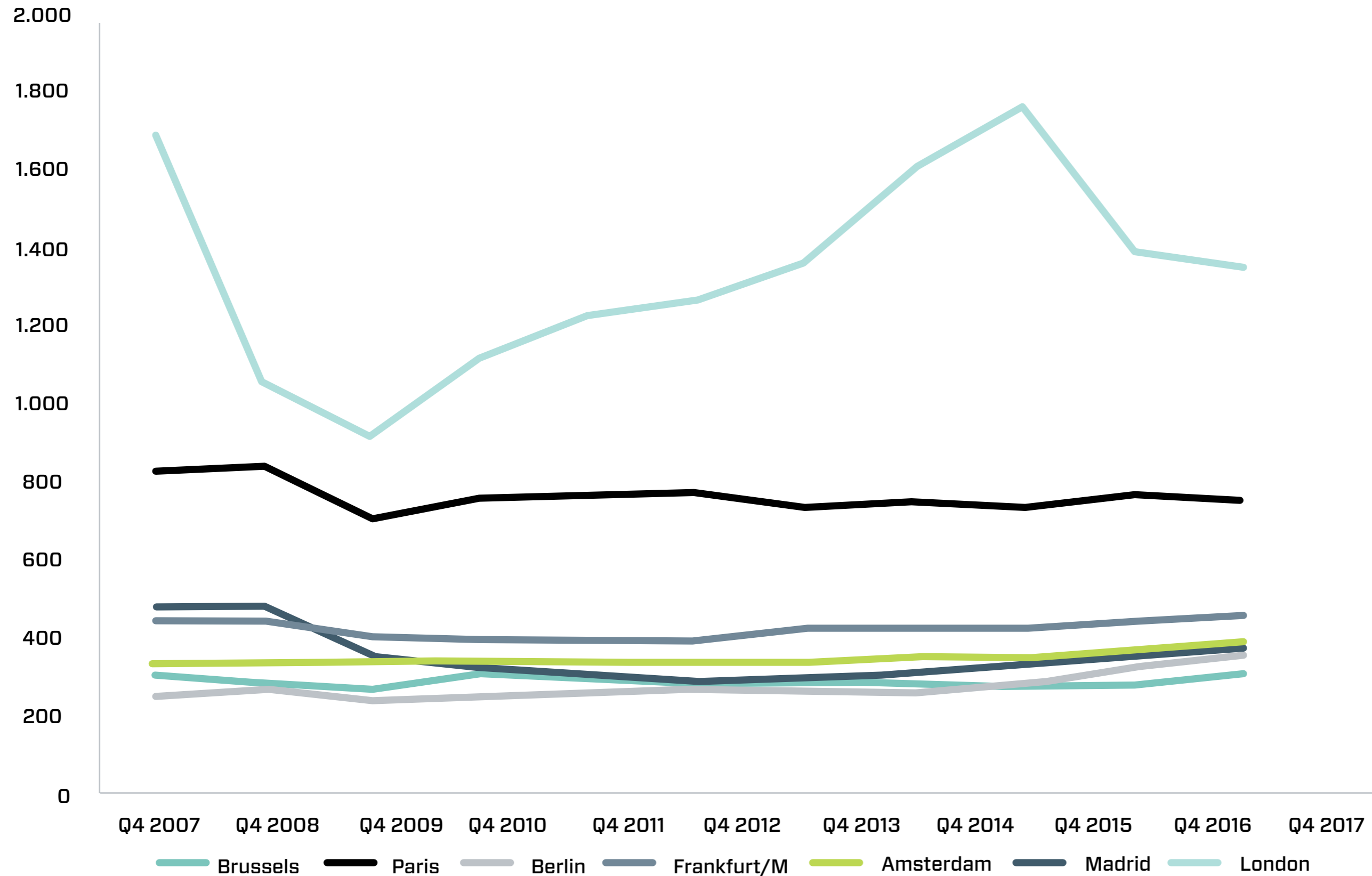
# Prime Office Yield



## Q4 2017

- 4,5 Brussels
- 3,75 Amsterdam
- 3,75 Madrid
- 3,5 London
- 3,25 Frankfurt/M
- 3 Paris
- 3 Berlin

# Prime Office Rent



## Q4 2017

<b>348</b>	Brussels
<b>750</b>	Paris
<b>348</b>	Berlin
<b>450</b>	Frankfurt/M
<b>369</b>	Amsterdam
<b>369</b>	Madrid
<b>1.343,76</b>	London